

PRINCE SHRI VENKATESHWARA PADMAVATHY ENGINEERING COLLEGE

Ponmar, Chennai - 600127



**Prince Shri Venkateshwara
Padmavathy Engineering College,
Ponmar, Chennai - 127**

**Mandatory Disclosure
2022-2023**

PRINCE SHRI VENKATESHWARA PADMAVATHY ENGINEERING COLLEGE

1.	Name of the Institution	PRINCE SHRI VENKATESHWARA PADMAVATHY ENGINEERING COLLEGE
	Address of the Institution	Medavakkam – Mambakkam Road, Ponmar, Chennai - 127
	City & PIN Code	Chennai-600 127
	State	Tamil Nadu
	Phone Number with STD code	044-22580801, 9840100040
	Email	prince@psvpec.in
	Website	www.psvpec.in
2.	Name and address of the Trust	PRINCE EDUCATIONAL SOCIETY
		No: 7, Kannaki Street, Madipakkam
		Chennai-600091.
3.	Name and Address of the Principal	Dr. G. Indira
	Exact Designation	Principal
	Phone number with STD code	044-22580801, 8668152803
	Email	prince@psvpec.in
	Highest Degree	M.E., Ph.D.
	Field of specialization	Electrical and Electronics Engineering
4.	Name of the affiliating University	Anna University, Chennai
	Address	Guindy, Chennai-600 025, Tamil Nadu.
	Website	www.annauniv.edu
	Latest affiliation Period	2022-2023

5. Governance

A. Members of the Governing Council:

Chairman	Dr. K. Vasudevan MA, B.Ed., Ph.D., Chairman, Prince Group of Institutions, Chennai
Management Member	Dr. V. Vishnu Karthik M.D., Vice Chairman, Prince Group of Institutions, Chennai
Management Member	Er. V. Prasanna Venkatesh., B.E., M.Sc.,(UK), Vice Chairman, Prince Group of Institutions, Chennai
Management Member	Ms. V. Ranjini M.Sc, M.Phil., Trust Member, Prince Group of Institutions, Chennai
Management Member	Mr.K. Elumalai, Trust Member Prince Group of Institutions, Chennai
State Government-Nominee	Dr. J. Sreeram Babu (Civil), Thanthai Periyar Government Institute of Technology, Vellore- 632 002
University Nominee	Dr.P.Aruna, Professor and Head, Department of Medical Physics, CEG Campus, Anna University, Chennai-600 025
Educationalist	Mr. K. Loganathan Chairman, Tmt. Abaranjee Ammal Educational Society, Chennai
Teachers of the College	Dr. Mahalakshmi V, ME., Ph.D., Dean (Academics), PSVPEC, Chennai
Teachers of the College	Dr. Senthil Kumar KK, M.E., Ph.D., HoD (ECE Dept) & CoE, PSVPEC, Chennai
Principal of the College (Ex-Officio)	Dr. G. Indira, M.E., Ph.D., Principal, PSVPEC, Chennai

B. Members of the Academic Advisory Body

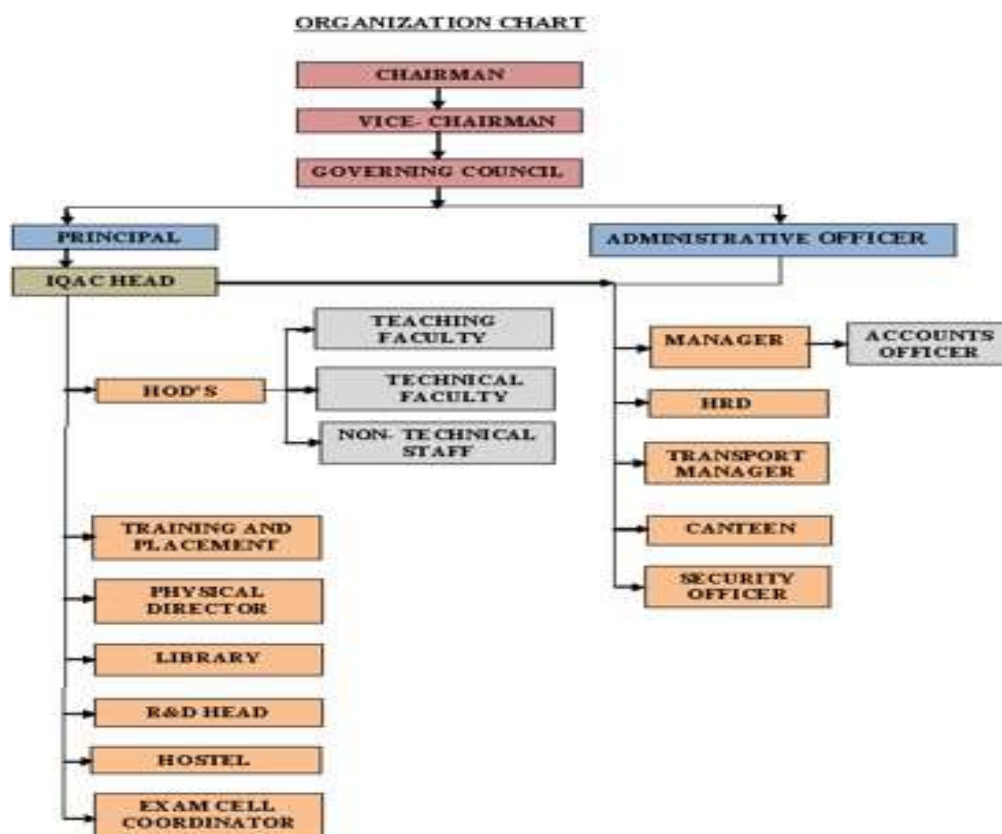
Internal Members	External Members
Dr. K Vasudevan, Chairman	Mr. S Gowthaman H&R Steel Detailing Pvt. Ltd.
Dr. V Vishnu Karthik, Vice Chairman	
Mr. V Prasanna Venkatesh, Vice Chairman	Mr. Vijay Anand Managing Director EmbDes Technologies Pvt. Ltd., Chennai
Dr. G Indira, Principal	
Dr. K K Senthilkumar, Prof. & Head / ECE	

Dr. V Mahalakshmi, Prof. & Head / EEE	Dr. V Dhamodharan HOD / Department of BBA Government Arts College for Men Nandhanam, Chennai
Dr. Preetha, Prof. & Head / CSE	
Dr. S Kathiresan, Prof. & Head / Mechanical	
Dr. P Balakumar, Prof. & Head / IT	
Ms. Kavitha Karthikeyan, IQAC Coordinator / Associate Prof. & Head /	Dr. N Mathan Karthick Vice Chairman Excel Group of Institutions Komarapalayam, Namakkal
Ms. S Rathika, Associate Prof. & Head / MBA	
Dr. P Sharmila, Prof. & Head / S&H	

C. Frequency of Board Meeting and Academic Advisory Body

Twice in a year

D. Organizational chart and processes



The institution has a strong organizational structure with leadership at all levels. A clear recruitment policy with service rules is in its place in the institution. New recruits undergo orientation programmes to orient them with the institution's organogram and the policies. The Institution ensures effective implementation of governance, administrative functions, policy guidelines, service rules for employment at all functional level also.

Organization chart provides the functional and relational hierarchy of the institution. Chairman heads the institution and looks after all the functions of the institution including academic, administrative and developmental activities. The Management along with the Governing Council and IQAC works towards making the institution to attain its goal of academic excellence and keeping in pace with the emerging trends and development of educational innovation. Decisions arrived by the Management Team, Governing Council and IQAC are issued through the Principal who acts as the main coordinator between all the three entities –the management, the staff members and the students.

Governing council: Governing council comprises of members of Management, Industry experts, Academic experts and members of IQAC. Governing council is formed to manage the ordinary affairs of the college in respect to the curriculum, ratification and approval of the appointments, discipline, legal matters, new initiatives and carrying out of the educational policy of the Society.

Principal: Principal is responsible for the co-ordination of all the academic activities, co-curricular and extra-curricular activities in accordance with the norms and standards prescribed by AICTE, Anna University, organize appointments of faculty members according to the norms of the AICTE and ANNA University, monitors admission, regular class works, placement activities, etc.,

Internal Quality Assurance Cell (IQAC): IQAC forms an integral part in instituting long term quality standards in the institution. IQAC ensures continuous improvement in the entire gamut of academic and administrative operations of PSVPEC by generating good academic ideas, processes and practices and ensuring their implementation for the benefit all the stakeholders — students, parents, teachers, staff, funding agencies, and society in general.

Head of the department: Head of the Department is responsible for all the academic activities, co-curricular and extra-curricular activities of the concerned department. HoD meetings headed by the Principal is organized every month for the review of the academic activities of the month and to plan for the activities of the following month.

Other leadership levels: Committees for Training and placement, Research and development, Hostel and Examinations are headed by senior faculty. Sports and Library are headed by Physical Director and Librarian respectively.

Administration: The General and Finance administration is headed by Administrative officer and Accounts officer supported with a team of technical and support staff.

E. Nature and Extent of involvement of Faculty and Students in Academic affairs / improvements

Our Institution is striving to be an eminent centre for academia, industry and research by imparting knowledge, relevant practices and inculcating human values to address global challenges through novelty and sustainability.

- Our well qualified and experienced faculty members are serving as members of Board of Studies, Academic Advisory Committee etc., and they take active part in curriculum revision, discussions related to the implementation of various academic activities and examination systems.
- Our Institution has earned the Top 1st position in Tamil Nadu amongst 450 Engineering Colleges affiliated with Anna University based on the Academic Performance.
- Our research programs focus on the beginning of theories, concepts and in turn revolutionize the world by coming up with ideas, products, and concepts which are useful to the society
- Having MOU with various industries and institutions for industrial connect, PSVPEC is publishing research articles with an industry focus on high impact factor journals under Scopus, Web of Science classified journals and patents. Industry research projects are being undertaken in various emerging areas.
- PSVPEC has very good infrastructure facilities like ICT enabled classrooms, smart classrooms, laboratories with all the required equipment and software facilities for the successful completion of the course.
- Faculty members of PSVPEC are all well qualified.
- In order to enhance the research capabilities in interdisciplinary areas the faculty members are encouraged to participate in different refresher courses, faculty development programs, workshops, seminar and conferences etc.
- Students are well trained during their course of study to improve their employability skills. A well-structured training programme is imparted to students from their first year of study itself.
- Cater to the need of diversified learning capability of the students; our Teaching learning process includes Traditional learning, Collaborative learning, experiential learning, participative learning, activity based learning, competition

based learning and Innovative learning.

- Effective mentoring system is in practice with a faculty mentor for every 20 students to monitor and guide the students to excel in their academic, co-curricular and extracurricular activities.
- A qualified Counselor is appointed to counsel the students related to their personal problems.
- Parent-teacher meeting are conducted frequently to convey the academic progress and to improve the parent-teacher-student relationship.
- The faculty counselor maintains the complete profile of the students to monitor the growth of the students with the help of a data book. Also monitors and motivates the students to effectively utilize the placement training programs and to make the students job ready.
- Internal Quality Assurance Cell (IQAC) is effectively working to promote measures for institutional functioning towards quality enhancement through internalization of quality culture and institutionalization of best practices.
- All the departments are associated with Professional Societies. Students are actively participating and organizing various technical events through Students' Chapters like Indian Society of Technical Education (ISTE), Society of Automotive Engineers, Indian Concrete Institute, Computer Society of India, Institution of Electronics and Tele communication Engineering etc.
- Students are encouraged and guided to participate in various competitions conducted by Government agencies, private organizations and premier Institutions.
- Various measures are taken to ensure the Gender Equity. The Institution strives to promote equality of opportunity and treatment for all men and women working and studying at the College. The college aims to foster an environment in which women folks are treated equally and considered as a major asset for the Institution. Anti-Ragging Committee, Discipline & Welfare Committee and Grievance & Redressal Committee are proactive in handling gender-based issues Encouragement for co-curricular & extracurricular activities for women Equal representation to women in all student council Equal opportunities to both the genders in terms of admissions, employment, training programs, sports activities & co-curricular activities The Health and Hygiene club also initiates and organizes various events and awareness camps on the health and wealth of women folks in the college Women Empowerment Committee plays a major role in empowering women through organizing the following programs to motivate and cherish the role of Women
 - To provide an inclusive environment i.e. tolerance and harmony amongst faculty and students various activities are being conducted.
 - National and International commemorative days, events and festivals are

celebrated throughout the year. To sensitize our students and employees to the constitutional obligations, events are regularly organized.

- A registered alumni cell is functioning and alumni are contributing significantly through financial contributions and support services for the development of the Institution. Institution is having the facilities for degradable and Non degradable waste Management which includes, solid waste management, Liquid waste management, Biomedical waste management, E waste management, Water recycling system and Hazardous chemical waste management.
- The Institution has taken effective steps to enhance the potential of ICT enabled teaching & learning. Training programmes were organized for faculty to maximize the use of ICT. The classes have been equipped with ICT facility. Faculty members were encouraged to take up MOOC and other courses on the SWAYAM and NPTEL platform. Workshops on teaching with Simulations, technology, etc., were given to faculty members. The faculty members were asked to include more of simulations, case analysis, presentations and videos in their lesson plan. The teachers also got trained in taking full-fledged ICT classes for the students. All the lecture halls are enabled with ICT facilities and videos of important study materials have been developed by the faculty members and links are provided in the website for the students to access and learn online. ICT-enabled tools for effective teaching and learning process The Institute follows ICT enabled teaching in addition to the traditional classroom education. Subsequent efforts are taken by the institute to provide e-learning atmosphere in the classroom: In addition to chalk and talk method of teaching, the faculty members are using the IT enabled learning tools such as PPT, Video clippings, Audio system, online sources, to expose the students for advanced knowledge and practical learning. Classrooms are fully furnished with LCD/OHP/Computers Most of the faculty use interactive methods for teaching. The major emphasis is on classroom interaction in terms of research paper presentations, seminars, debates, group discussions, assignments, quiz/tests/viva and laboratory work. The institution has provided 36 ICT enabled classrooms, including 08 smart classrooms and 3 ICT enabled Seminar halls. The college has provided internet and Wi-Fi facility with 75 Mbps internet bandwidth. The classrooms are equipped with LCD projectors with WIFI facilities. Seminar halls & Smart classrooms are equipped with LCD projectors, computer facilities, projector screen, audio system, laptop connecting facility uninterrupted power supply (UPS). Online tests for placement training are conducted through TEZMOS software. The institution has digital library, which helps the students to access NPTEL lectures and study materials. Adequate number of books, Journals, e-journals and e-books are available in the library. Institute premises are Wi-Fi

enabled Specialized computer laboratory with an internet connection has been provided to promote independent learning. Wi-Fi facility for access of internet is provided on individual laptop and mobile devices. Well monitored security is provided to Wi-Fi users. Its access is controlled by the system administrator. Various devices/technology in ICT includes: Access of course materials through remote devices, Online digital repositories for lectures, course materials, and digital library, Online based academic management systems, Employing the flipped classroom concept, Making use of handheld computers, tablet computers, audio players, projector devices etc.

- All Faculty members are well trained in using ICT tools for the teaching learning process. Every semester IQAC organizes FDPs to educate faculty members on new tools and techniques for effective teaching through ICT
- The institution promotes students council for facilitating students representation and engagements in various academic & administrative, extra-curricular and co-curricular activities. The objectives of the Students Council and the committees are: To inculcate the qualities of leadership, organization, commitment & responsibility in the students. To make the students participate in the development of the institute as well as in the process develop their personality, organizational skills and career through interactive programs with the faculty, administration and society.
- To provide a common platform to students for co-curricular and extra-curricular activities. It is responsible for all the major technical, cultural, literary and sports activities organized in the college premises. Activities under the council will be well supported by a team of faculty members. Each committee comprises of Convener, students' members and staff members. The committees are formed based on the academic and administrative activities initiated and organized in the college. The formation of the committees has enhanced the smooth functioning of the academic activities and other co-curricular events.
- Role of the Students council: To formally represent every student in the College. To identify and help resolving the issues faced by students in the College. To officially inform students thought to the college administration on any subject concerning to the students To promote and encourage the students in organizing co-curricular, extra-curricular and other extension activities.
- Class committee: Every class has a class committee which consists of the students and faculty members. Class committee meetings are organized periodically and

at times of need. It serves as the voice of the students in front of faculty and has a say in academic matters such as conduct of tests and so on.

F. Mechanism/ Norms and Procedure for democratic/ good Governance

- The Institute's vision and mission statements represent the Institution's specific qualities and represent successful leadership enhanced through its effective governance. Governance is to put on record, the structure and practices that have resulted in efficient functioning to provide benefits and satisfaction to all stakeholders and hence lead to overall quality enhancement. The institute's governance makes sure; there is integrity at all levels of individuals, systems and organization in relation to external and internal activities of the college. Strong leadership and management skills in all of the places, where needed are maintained. Lean and competent administration of the governance delivers improvements in research quality and entrepreneurship eco-system. Robust and transparent financial systems, especially regarding procurement; and a strong internal and external audit system. The institution also allows students participation in management and governance at all levels.
- **Distinctive features of our Mission:** The vision and mission of our college focus on Outcome Based Education (OBE). Aligned to that, our college moulds the younger generation to face the challenges in the society. Besides above, our students are moulded to be socially aware and become more responsible for contributing towards societal transformation and nation building along with social responsibility.
- **Nature of governance:** Top management along with Principal and staff shoulder the responsibility in executing the activities that comply with the mission and vision of the institution. Faculty members and students also take leadership roles in various decision making bodies by acting as members in various committees like Governing Council, Internal Quality Assurance Cell, Programme Assessment Committee, Department Advisory Committee, Training and placement, Budget committee, Grievances and Redressal committee, Research and Development Cell, etc.
- **Perspective plan for development:** Institution has perspective plan in tune with vision and mission of the Institution for the effective governance and leadership. Suggestion of the stakeholders and exemplary work of the decision making bodies result in a phenomenal growth and achievement of the perspective plan as detailed below
- NAAC Accreditation
- Enhancing Quality Teaching and Learning

- More funding for research activities.
- Promotion of research among staff and students
- Accreditation with reputed companies.
- Improving Entrepreneurship development activities
- Technology incubators and collaboration of industries.
- Centers of Excellence.
- Improving quality assurance and sustainability
- Eco friendly infrastructure.
- Enhancing Extension activities.
- The Institution supports and motivates the culture of decentralization and participative management. Institution focuses on decentralization by intending equal opportunity to all faculty members to participate in the functioning of the Institution. Each committee has been provided with specific functions catering to the needs of institution for the ongoing progress and development of the Institution.
- Management committee takes care of infrastructure facilities which fulfil the quality and the required needs of the education to reach the set goals or bench – marks of the Institution. It also extends all the amenities for the teaching, non-teaching faculty and students.
- The faculty members are actively involved in administrative roles and duties by taking on positions such as Department Heads, Wardens, Faculty In-Charges, clubs and committee conveners, co-conveners, members, etc. They associate themselves with various committees namely Purchase committee, IQAC, Academic council, R&D cell, Class Committee, Entrepreneur Development Cell, NSS, Rotaract, and many more. The faculty members are actively engaged in driving a transition through the Mission of the Institution in order to identify and design the road map to attain the vision of the Institution.
- The institution promotes the culture of participative management at the strategic level, functional level and operational level.

Strategic level:- The Principal, Governing Council, staff and the IQAC are involved in defining policies & procedures, framing guidelines and rules & regulations pertaining to admission, examination, code of conduct-discipline, grievance, support services, finance etc.

Functional level: Faculty members share knowledge among themselves, students and staff members while working for a committee. Principal and faculty members are involved in joint research and have published papers

Operational level: The Principal and faculty members interact with government and external agencies & faculty members maintain interactions with the concerned departments of affiliating university.

- Students and office staff join hands with the Principal and faculty for the execution of different academic, administrative, extension related, co- and extracurricular activities.

G. Students Feedback on Institutional Governance / Faculty Performance

Feedbacks are collected from the following stakeholders

- Students
- Faculties
- Alumni
- Employer
- Class Committee Meetings as per Anna University Guidelines
- Self-Appraisal (Faculty)
- Course end survey
- Exit survey

Feedbacks from various stakeholders are collected, analyzed and the actions are taken based on the stake holders' feedback and they are available in our institution website also.

H. Grievance Redressal mechanism for Faculty, staff and students

Grievances related to teaching learning, infrastructure facilities, valuation etc., are addressed effectively through the Grievance and Redressal Committee.

Grievance and Redressal Committee Members:

Committee Members	Designation
Dr. G. Indira	Principal
Ms. V. Mythili	Convener
Ms. B. Kalpana	Co-Convener
Dr. K. Senthamil Selvan	Member
Dr. S. Kathiresan	Member
Ms. S. Kavitha Karthikeyan	Member
Dr. N.R. SumithraBai	External Member
Mr. A.R. Aravind	Member
Mr. S. Shriram – IV CSE	Student Member
Ms. J. Logeshwari - IV IT	Student Member
Mr. Saisabarisha – IV EEE	Student Member

I. Establishment of Anti Ragging Committee

ANTI RAGGING SQUAD MEMBERS

S No	Name of the Member
1	Dr. K. K. SENTHIL KUMAR
2	Dr. MAHALAKSHMI V
3	Mrs. RATHIKA S
4	Mr. RAJIV GANDHI N
5	Mr. N. JANAKIRAMAN
6	Dr. Preetha M
7	Mrs. HEMALATHA T

Anti-Ragging Committee Members:

Committee Members	Designation
Dr. G. INDIRA	Chairman
Dr. K. K. SENTHIL KUMAR	Convener
Dr. MAHALAKSHMI V	Member
Mrs. RATHIKA S	Member
Mr. RAJIV GANDHI N	Member
Mr. N. JANAKIRAMAN	Member
Dr. Preetha M	Member
Mrs. HEMALATHA T	Member

J. Establishment of Internal Complaint Committee (ICC)

Sexual Harassment Committee Members

Committee Members	Designation
Dr. G. Indira	Principal
Er. K. Parthasarathy	Member
Dr. Jayashree	Convener

Dr. Sharmila P	Student Counselor
Mrs. Chandrakala .P	Co-Convener
Ms. V.Mythili	Member
Ms. Kalpana B	Member
Ms. Vinithra Banu. T	Member
Ms. Kavitha Karthikeyan	Member

Women Empowerment Cell Members:

Committee Members	Designation
Dr. G. Indira	Principal
Ms. A. S. Valarmathy	Convener
Dr. K.K. Senthilkumar	Co-Convener
Ms. Sumathi R	Member
Ms. Suganya V	Member
Ms. Nivetha CS	Member
Ms. Mahalakshmi G	Member
Ms. Little Femilin Jana	Member

K. Establishment of Committee of SC/ ST

Member Name	Designation
Dr. G. Indira	Principal
Dr. Sharmila P	Convener
Mr. Murali MJ	Member
Ms. Vinithra Banu. T	Member
Mr. Santhosh Kumar C	Member
Ms. Vijayalakshmi G	Member
Ms. Sirija M	Member
Ms. Reena R	Member

L. Internal Quality Assurance Cell

6. PROGRAMMES

A. Name of Programmes approved by AICTE

1. B.E Civil Engineering
2. B.E Computer Science and Engineering
3. B.E Electrical and Electronics Engineering
4. B.E Electronics and Communication Engineering
5. B.E Mechanical Engineering
6. B.Tech Information Technology
7. PG – Master of Business Administration

➤ Name of Programmes Accredited by NBA - Nil

➤ Status of Accreditation of the Courses

SL.NO	CONTENT	DETAILS
1	Total Number of Courses	8
2	No. of Courses for which applied for Accreditation	Nil
3	Status of Accreditation – Preliminary/ Applied for SAR and results awaited/ Applied for SAR and visits completed/ Results of the visits awaited/ Rejected/ Approved for ...Courses	Preliminary

For each Programme the following details are to be given

1) Name	B.E. - Civil Engineering
• Number of seats	30
• Duration	4 Years
• Fee	Govt. Quota: Rs.50,000/- Mgmt Quota:Rs.85,000/-
• Accreditation Status of the course	--Not Applicable--

<ul style="list-style-type: none">Placement Facilities		https://www.psvpec.in			
<ul style="list-style-type: none">Campus placement in last three years with minimum salary, maximum salary and average salary					
		2021-22	2020-21	2019-20	
	% Students passed with Distinction	0	5	2	
	% Students passed with First Class	2	6	13	
	Students Placed	2	5	14	
	Average Pay package, Rs./ Year	2,50,000	4,50,000	3,75,000	
	Students opted for Higher Studies	0	6	2	
2) Name		B.E. – Computer Science and Engineering			
<ul style="list-style-type: none">Number of seats		60			
<ul style="list-style-type: none">Duration		4 Years			
<ul style="list-style-type: none">Fee		Govt. Quota: Rs.50,000/- Mgmt Quota: Rs.85,000/-			
<ul style="list-style-type: none">Accreditation Status of the course		--Not Applicable--			
<ul style="list-style-type: none">Placement Facilities		<ul style="list-style-type: none">https://www.psvpec.in			
Campus placement in last three years with minimum salary, maximum salary and average salary					
		2021-22	2020-21	2019-20	
	% Students passed with Distinction	3	5	7	
	% Students passed with First Class	38	36	36	
	Students Placed	35	34	42	
	Average Pay package, Rs./ Year	550000	550000	550000	
	Students opted for Higher Studies	4	8	4	
3) Name		B.E. – Electrical and Electronics			
		Engineering			

• Number of seats	30
• Duration	4 Years
• Fee	Govt. Quota: Rs.50,000/- Mgmt Quota: Rs.85,000/-
• Accreditation Status of the course	--Not Applicable--
• Placement Facilities	• https://www.psvpec.in

		2021-22	2020-21	2019-20
	% Students passed with Distinction	1	6	4
	% Students passed with First Class	8	1 2	12
	Students Placed	6	1 6	16
	Average Pay package, Rs./ Year	350000	450000	400000
	Students opted for Higher Studies	0	6	3

4) Name	B.E. – Electronics and Communication Engineering
• Number of seats	120
• Duration	4 Years
• Fee	Govt. Quota: Rs.50,000/- Mgmt Quota: Rs.85,000/-
• Accreditation Status of the course	--Not Applicable--
• Placement Facilities	https://www.psvpec.in
Campus placement in last three years with minimum salary, maximum salary and average salary	

		2021-22	2020-21	2019-20
	% Students passed with Distinction	3	12	12
	% Students passed with First Class	34	58	68
	Students Placed	31	65	77

Average Pay package, Rs./ Year	500000	550000	535000
Students opted for Higher Studies	2	13	8

5) Name	B.E. – Mechanical Engineering
• Number of seats	90
• Duration	4 Years
• Fee	Govt. Quota: Rs.50,000/- Mgmt Quota: Rs.85,000/-
• Accreditation Status of the course	--Not Applicable--
• Placement Facilities	<ul style="list-style-type: none"> https://www.psvpec.in
Campus placement in last three years with minimum salary, maximum salary and average salary	

		2021-22	2020-21	2019-20
% Students passed with Distinction		3	8	9
% Students passed with First Class		27	60	62
Students Placed		25	54	69
Average Pay package, Rs./ Year		450000	450000	400000
Students opted for Higher Studies		2	15	6

6) Name	B.Tech – Information Technology
• Number of seats	60
• Duration	4 Years
• Fee	Govt. Quota: Rs.50,000/- Mgmt Quota: Rs.85,000/-
• Accreditation Status of the course	--Not Applicable--
• Placement Facilities	<ul style="list-style-type: none"> https://www.psvpec.in
Campus placement in last three years with minimum salary, maximum salary and average salary	

		2021-22	2020-21	2019-20
	% Students passed with Distinction	3	6	5
	% Students passed with First Class	28	14	18
	Students Placed	25	19	23
	Average Pay package, Rs./ Year	500000	550000	550000
	Students opted for Higher Studies	3	5	4

7) Name	PG – Master of Business Administration
• Number of seats	60
• Duration	2 Years
• Fee	Govt. Quota: Rs.35,000/- Mgmt Quota: Rs.35,000/-
• Accreditation Status of the course	--Not Applicable--
• Placement Facilities	https://www.psvpec.in
Campus placement in last three years with minimum salary, maximum salary and average salary	

		2021-22	2020-21	2019-20
	% Students passed with Distinction	1	6	5
	% Students passed with First Class	20	10	20
	Students Placed	15	6	23
	Average Pay package, Rs./ Year	350000	350000	325000
	Students opted for Higher Studies	1	15	1

7. Profile of the Principal

Name	Dr. G. Indira			
Date of Birth	05.01.1980			
Unique ID	1-1-462127319			
Educational Qualifications	Degree	Specialization		Class
	B.E	Electrical and Electronics Engineering		First
	M.E	Power Electronics and Drives		First
	Ph.D	Faculty of Electrical Engineering		Successfully Completed
Work Experience	Teaching	19		
	Research	4		
	Industry	1		
	Others	Nil		
Area of Specialization	Faculty of Electrical Engineering (Power Electronics and Drives): Analysis of Superconducting Magnetic Energy Storage system in association with Super Capacitors			

8. Fee

1	Details of fee, as approved by State Fee Committee, for the Institution	
i)	For Govt. Quota	Rs. 50,000 /-
ii)	For Mgmt. Quota Accredited Courses:	Rs. 85,000 /-
2	Time schedule for payment of fee for the entire programme	During the beginning of the ODD semester of every Academic year
	No. of students given Fee waiver	252
	Number of scholarship offered by the Institution	474 Students
	Criteria for fee waivers/scholarship	To encourage and motivate the Students, the Management provides them with attractive scholarships for their academic achievements in School & their semester results and for excellence; Other Economic factors
	Estimated cost of Boarding and	65000

	Lodging in Hostels	
	Any other fee please specify	10000

9. Admission

Number of seats sanctioned with the year of approval	Year	2021-22	2020-21	2019-20
	Sanctioned Intake	459	498	498
Number of students admitted under various categories each year in the last three years	Year	2021-22	2020-21	2019-20
	Admitted	274	274	274

10. Admission Procedure

Mention the admission test being followed, name and address of the Test Agency and its URL (website)	For B.E./B.Tech., TNEA (Tamil Nadu Engineering Admissions, Anna University, Chennai-600 025.) Web: www.annauniv.edu For M.E. – TANCET (Tamil Nadu Common Entrance Test, Anna University, Chennai-600 025.) Web: www.annauniv.edu
Number of seats allotted to different Test Qualified candidate separately (AIEEE/ CET (State conducted test/ University tests/ CMAT/ GPAT)/ Association conducted test)	TNEA Allotment: 420 Consortium Allotment: 420
Calendar for admission against Management/vacant seats	For B.E./B.Tech., (Consortium of Self-Financing Professional, Arts and Science Colleges in Tamil Nadu, Chennai-600014.) Web: www.tnsfconsortium.org
• Last date of request for applications	As announced by the Directorate of Technical Education, Tamil Nadu.
• Last date of submission of applications	As announced by the Directorate of Technical Education, Tamil Nadu.
• Dates for announcing final results	As announced by the Directorate of Technical Education, Tamil Nadu.
• Release of admission list (main list and waiting list shall be announced on the	Yes

same day)	
• Date for acceptance by the candidate (time given shall in no case be less than 15days)	As per the Anna University Allotment order
• Last date for closing of admission	As announced by the Anna University, Chennai and Directorate of Technical Education.
• Starting of the Academic session	As announced by the Anna University, Chennai and Directorate of Technical Education.
• The waiting list shall be activated only on the expiry of date of main list	Yes
• The policy of refund of the Fee, in case of withdrawal, shall be clearly notified	Yes

11. Criteria and Weightages for Admission

• Describe each criterion with its respective weightages i.e. Admission Test, marks in qualifying examination etc.		• A Pass in twelfth standard of Tamil Nadu H.S.C. (+2, Academic) with Mathematics, Physics and Chemistry. (or) A Pass in an equivalent examination
• Mention the minimum level of acceptance, if Any		
Community	H.S.C. (Academic) or Equivalent	H.S.C. (Vocational)
SC/ST	An average marks of 40% in Physics, Chemistry and Mathematics	An average marks of 40% in Vocational Theory, Practical and Mathematics
MBC/DC	An average marks of 40% in Physics, Chemistry and Mathematics	An average marks of 40% in Vocational Theory, Practical and Mathematics
BC	An average marks of 45% in Physics, Chemistry and Mathematics	An average marks of 45% in Physics, Chemistry And Mathematics

Other Communities	An average marks of 50% in Physics, Chemistry and Mathematics	An average marks of 50% in Physics, Chemistry and Mathematics
--------------------------	---	---

12. List of Applications

Number of candidate whose applications have been received along with percentile/ percentage score for each of the qualifying examination in separate categories for open seats. List of candidate who have applied along with percentage and percentile score for Management quota seats	1000
--	-------------

13. Results of Admission Under Management seats/Vacant seats

Composition of selection team for admission under Management Quota with the brief profile of members (This information be made available in the public domain after the admission process is over	on the basis of 12th Mark by Consortium of Self-Financing Professional, Arts and Science Colleges in Tamil Nadu
Number of candidate who have been offered admission	285
Number of the candidate who joined within the date, vacancy position in each category before operation of waiting list	-

14. Information of Infrastructure and Other Resources Available

Number of Class Rooms and size of each		36 nos
Number of Tutorial rooms and size of each		6 nos
Number of Laboratories and size of each		
1	Physics Laboratory	252 Sq. M
2	Chemistry Laboratory	252 Sq. M
3	Microprocessor And Microcontroller Laboratory	252 Sq. M
4	Digital Signal Processing Laboratory	252 Sq. M
5	Electronic Circuits Ii Laboratory	252 Sq. M

6	Linear Integrated Circuits Laboratory	252 Sq. M
7	Computer Networks Laboratory	252 Sq. M
8	Optical And Microwave Laboratory	252 Sq. M
9	Electrical Machines Laboratory	252 Sq. M
10	Power System Simulation Laboratory	252 Sq. M
11	Electric Circuits Laboratory	252 Sq. M
12	Power Electronics And Drives Lab	252 Sq. M
13	Control And Instrumentation Lab	252 Sq. M
14	Computing Centre	252 Sq. M
15	Mobile Computing Laboratory	252 Sq. M
16	PSPP Laboratory	252 Sq. M
17	Database Management System Laboratory	252 Sq. M
18	Web Programming And Security Lab	252 Sq. M
19	Programming And Data Structure Laboratory I & II	252 Sq. M
20	CAD/CAM Lab	252 Sq. M
21	Simulation And Analysis Lab	252 Sq. M
22	Thermal Laboratory	252 Sq. M
23	Strength Of Materials Laboratory	252 Sq. M
24	Metrology And Measurement Lab	252 Sq. M
25	Mechatronics Lab	252 Sq. M
26	Workshop –EPL	252 Sq. M
27	Manufacturing Technology Laboratory	252 Sq. M
28	Environmental Laboratory	252 Sq. M
29	Surveying Laboratory	252 Sq. M
30	Soil Mechanics Laboratory	252 Sq. M
31	Concrete And Highway Engineering Laboratory	252 Sq. M

Central Examination facility, number of rooms and capacity of each	450 nos
Number of Computer Centre with capacity of each	1 (300 capacity)
Online Examination facility (Number of nodes, internet bandwidth, etc.)	450 nos
Barrier Free Built Environment for disabled and elderly persons	Yes; Available
Fire and Safety Certificate	Yes, available

Hostel Facilities	Boys Hostel – 200 nos capacity; Girls Hostel – 200 nos capacity
-------------------	--

- **Library**

1	Number of Library books / titles / journals available (Programme-wise)	37153 Volumes and 21372 Titles
2	List of Online national / international journals subscribed	Listed Below

Number of Journals

S. No.	Department	Number of Journals
1	Civil Engineering	49
2	Computer Science and Engineering	39
3	Electrical and Electronics Engineering	30
4	Electronics and Communication Engineering	124
5	Mechanical Engineering	12
6	Information Technology	39
7	Master of Business Administration	244

3	E-Library facilities	Yes Available ; 30 computers with internet facility
4	National Digital Library (NDL) subscription details	E-Resource Packages Science Direct, J – GATE, EBSCO: E-Books , NLIST, NDL and DELNET etc.

- **Laboratory and Workshop**

➤ **List of Major Equipments / Facilities in each Laboratory / Workshop**

➤ **List of Experimental Setup in each Laboratory / Workshop**

1	Physics Laboratory	252 Sq. M
2	Chemistry Laboratory	252 Sq. M

3	Microprocessor And Microcontroller Laboratory	252 Sq. M
4	Digital Signal Processing Laboratory	252 Sq. M
5	Electronic Circuits Ii Laboratory	252 Sq. M
6	Linear Integrated Circuits Laboratory	252 Sq. M
7	Computer Networks Laboratory	252 Sq. M
8	Optical And Microwave Laboratory	252 Sq. M
9	Electrical Machines Laboratory	252 Sq. M
10	Power System Simulation Laboratory	252 Sq. M
11	Electric Circuits Laboratory	252 Sq. M
12	Power Electronics And Drives Lab	252 Sq. M
13	Control And Instrumentation Lab	252 Sq. M
14	Computing Centre	252 Sq. M
15	Mobile Computing Laboratory	252 Sq. M
16	PSPP Laboratory	252 Sq. M
17	Database Management System Laboratory	252 Sq. M
18	Web Programming And Security Lab	252 Sq. M
19	Programming And Data Structure Laboratory I & II	252 Sq. M
20	CAD/CAM Lab	252 Sq. M
21	Simulation And Analysis Lab	252 Sq. M
22	Thermal Laboratory	252 Sq. M
23	Strength Of Materials Laboratory	252 Sq. M
24	Metrology And Measurement Lab	252 Sq. M
25	Mechatronics Lab	252 Sq. M
26	Workshop –EPL	252 Sq. M
27	Manufacturing Technology Laboratory	252 Sq. M
28	Environmental Laboratory	252 Sq. M
29	Surveying Laboratory	252 Sq. M
30	Soil Mechanics Laboratory	252 Sq. M
31	Concrete And Highway Engineering Laboratory	252 Sq. M
32	Research and Development	1200 Sq.m
33	Workshop	1200 Sq.m

• ***Computing Facilities***

Internet Bandwidth	75 MBPS
--------------------	----------------

Number and Configuration of System				
SL.NO.	DEPARTMENT	LABORATORY NAME	QTY	SPECIFICATION
1	CSE	Python And Computer Programming Laboratory	60	Intel Core I3 2120 Processor, Dual Core Processor/Intel DH61WW, DG31PR,/4GB DDR3, 1GB DDR2/Seagate 500GB/250GB Sata Hard Disk/Logitech Key Board/Logitech USB & Optical Mouse/Acer 18.5" LED Monitor
2	IT	Computing Centre	114	Intel Core I3 2120 Processor, Dual Core Processor/Intel DH61WW, DG31PR,/4GB DDR3, 2GB DDR2/Seagate 500GB Sata Hard Disk/Logitech Key Board/Logitech USB & Optical Mouse/Acer 18.5" LED Monitor
3	CSE	Mobile Computing Laboratory	48	Intel Core I3 2120 Processor,/Intel DH61WW/4GB DDR3/Seagate 500GB Sata Hard Disk/Logitech Key Board/Logitech USB & Optical Mouse/Acer 18.5" LED Monitor
4	IT	Web Programming And Security Laboratory	40	Intel Core I3 2120 Processor, Dual Core Processor/Intel DH61WW, DG41WV,/4GB DDR3, 2GB DDR2/Seagate 500GB Sata Hard Disk/Logitech Key Board/Logitech USB & Optical Mouse/Acer 18.5" LED Monitor
5	IT	Database Management System	53	Intel Core I3 2120 Processor,/Intel DH61WW/4GB DDR3/Seagate 500GB Sata Hard Disk/Logitech Key Board/Logitech USB & Optical Mouse/Acer 18.5" LED Monitor
6	CSE	Programming And Data Structures Laboratory I & II	56	Dual Core Processor/DG41WV/2GB DDR2/500GB Sata Hard Disk/Logitech Key Board/Logitech Optical Mouse/Acer 18.5" LED Monitor
7	ECE	Linear Integrated Circuits Laboratory	17	Intel Core I3 2120 Processor, Dual Core Processor/Intel DH61WW, DG41RQ,/4GB DDR3, 1GB DDR2/Seagate 500GB/250GB Sata Hard Disk/Logitech Key Board/Logitech USB & Optical Mouse/Acer 18.5" LED Monitor

8	ECE	Computer Networks Laboratory	31	Intel Core I3 2120 Processor, Dual Core Processor/Intel DH61WW, DG41RQ,/4GB DDR3, 1GB DDR2/Seagate 500GB/250GB Sata Hard Disk/Logitech Key Board/Logitech USB & Optical Mouse/Acer 18.5” LED Monitor
Total number of system connected by LAN			609	
Total number of system connected by WAN			609	
Major software packages available			Available as per the requirement	
Special purpose facilities available (Conduct of online Meetings/ Webinars/ Workshops, etc.)			3 Seminar Halls with all the required facilities	
Facilities for conduct of classes/courses in online mode (Theory & Practical)				
ICT enabled class rooms; Online Class through : Zoom Platform & Google Meet				
Innovation Cell			Prince Shri Venkateshwara Padmavathy Engineering College in association with Ministry of Human Resource Development (MHRD), Govt. of India has established ‘MHRD’s Institution’s Innovation Council (IIC) during November 2018 to systematically foster the culture of Innovation. The main objective of IIC at PSVPEC is to encourage, inspire and nurture young students by supporting them to work with new ideas and transform them into prototypes. IIC is established to promote innovation in the Institution through multitudinous modes leading to an innovation promotion eco-system in the campus.	
SC / ST Cell			The SC and ST Cell in our institution promote the special interest of students in the reserved category and to provide special inputs in areas where the students experience difficulty. The cell regularly have to conduct remedial coaching classes on life skills, personality development, writing assignments and make presentations and have to organize interactive sessions and informal meeting with students to attend to	

	their personal, social and academic problems.
Compliance of the National Academic Depository (NAD), applicable to PGCM/ PGDM Institutions and University Departments	-Not Applicable -

• **List of facilities available**

Games and Sports Facilities

S.NO	Sports/Indoor And Outdoor Games Grounds/Courts	Number Of Courts/Grounds	Size LxB In M	Area Sq.M
1	Volley Ball	2	40x20	800
2	Basketball	2	40x20	800
3	Throwball	1	40x20	800
4	Football	1	120x90	10800
5	Handball	1	40x20	800
6	Kho Kho	1	27x16	432
7	Kabaddi	2	13x10	130
8	Table Tennis	2	-	1200
9	Chess	1	-	1200
10	Carrom	1	-	1200
11	Yoga Hall	1	-	1200
12	Cricket	1		4 Acres

Facilities for GYM

S.NO	PARTICULARS	NUMBER OF STATION
1	Rod	5
2	Multi Gym 4 Station	1
3	Push Up Stand	2
4	Multi Bench 1320 Avon	1
5	Leg Press Hack Squat	1
6	Gym ball	1
7	Bumbles	100KG

	8	Bench Press With Squat Stand	1	
	9	Flat Bench 2xs Pipes	1	
	10	Abs/Bench Inclined/Declined/Flat	1	
	11	Plates	100KG	
	12	Bumbles/Plant	1	
	13	Thread Mill	1	
	14	Cycling	1	
<ul style="list-style-type: none">• Extra-Curricular Activities				
<p>The institution has an auditorium with a seating capacity of 300 and equipped with LCD projector, screen and audio system with multimedia capability. Workshops, seminars, and other co-curricular and extracurricular events in the institution are held in the auditorium.</p> <p>Cultural activities The institution provides outdoor open stage as well as auditorium to conduct various co-curricular activities of clubs and committees namely Cultural and event committee, Shakespeare Club, Science Club, Ramanujam Club, Eco club, EDC, Women empowerment cell in order to bring out their hidden talents and encourage them to participate in the inter department level and inter college level competitions. The college organizes events related through NSS, Health club, Rotaract club and YRC. Functions like Cultural Fest, Independence Day, Republic Day, Sports day, Teacher’s Day, Women’s Day, Annual Day etc., are celebrated. Co-curricular & Extracurricular Activities Every year institute organizes various cultural activities during fresher’s welcome, annual social gathering and farewell events to explore and nourish the hidden talents of students. Institute has a well-furnished auditorium having 500 students seating capacity to carry out various cultural / extracurricular activities like Induction Day, dance, rangoli and competition, annual social gathering, farewell, programs on yoga and meditation etc. The facilities for sports, games and cultural activities are efficiently utilized by students for various events like Symposiums, Annual day, sports week, etc. The usage for the same is monitored.</p>				
Soft Skill Development Facilities		<p>The Institution offers various training programs for the development of skills of the students to reach their destination. Trainings are provided to all the students right from their first year onwards.</p> <p>Our Unique Proposition includes:</p> <ul style="list-style-type: none">• Training modules by Industry Experts		

	<ul style="list-style-type: none"> • Training offered by experienced faculties with industry experience and soft skills • Year-wise scheduled programs, flexible option to choose from and industry customized program • Innovative Learning practices and infrastructure focused on futuristic technology • Provide live platform to demonstrate learning through guided social and industrial projects • Students are handheld for patent registration of their innovative projects • Continuous assessments and monitoring for quality improvement and skill set mapping • Peer learning to improve team work and cognitive skills
<ul style="list-style-type: none"> • Teaching Learning Process 	
Curricula and syllabus for each of the Programmes as approved by the University	Available in website www.psvpec.in
Academic Calendar of the University	Available in website www.psvpec.in
Academic Time Table with the name of the Faculty members handling the Course	Available in website www.psvpec.in
Teaching Load of each Faculty	Professor: 1 Theory & 1 Lab Associate and Assistant Professor: 2 Theory & 1 Lab
Internal Continuous Evaluation System and place	
<p>Internal Assessment: Internal Assessment comprises three Internal Assessment Tests. Various components of internal assessment mechanism are briefly discussed with respect to frequency and variety. 1. Internal Assessment (IA) tests: Three internal assessment tests are conducted during the semester. IA Test-1 covers unit 1 & 2, IA Test-2 covers unit 3 & 4 and IA Test-3 covers all the 5 units. Question papers are set to evaluate the attainment of various Course Outcomes along with thought-provoking</p>	

questions. This ensures a wide variety of questions which adds robustness to the system.

Laboratory Courses: The following process will be followed for the evaluation of Laboratory Courses

- Evaluation of the student's observation book and record notebook.
- Evaluation by oral examination on the student's knowledge before the start of experiment.
- Model practical examination.

15. Enrolment and Placement details of students in the last 3 years

16. List of Research Projects / Consultancy works

Number of Projects carried out, funding agency, grants received	15
Publications (if any) out of research in last three years out of masters projects	22
Industry linkage	114
MOUs with Industries	18

17. LoA and subsequent EoA till the current Academic Year

EOA : F.No. Southern/1-7002364140/2020/EOA dated 30.04.2020

18. Accounted audited statement for the last three years

Available in www.psvpec.in

19. Best Practices adopted, if any

Best Practice I - Research, Innovations and Entrepreneurship development through CRED

1. Title: RIE through CRED – Research, Innovations and Entrepreneurship development through CRED (Centre for Innovative Research, Incubation and Entrepreneurship Development)

2. Objectives: Promotion of research and innovations among students and faculty members Creation of an aspirational entrepreneurship culture i.e., opportunity driven

entrepreneurship as opposed to necessity driven Enhancement of the support ecosystem for entrepreneurs catering to local and national needs Rapid and inclusive growth of Small scale industries / Startup enterprises and innovation

3. Context: The institution established the Research & Development Cell during the year 2015. With its initiation the team was able to promote research culture among the faculty and students, promoted consultancy works, encouraged publication of research papers in reputed journals. Though patent rights and entrepreneurship development was a major focus, much light was not thrown on those two initiatives. Strategically thinking there was a need to boost the research eco-system along with development of innovations, patents and entrepreneurship among the students and faculty members. In such a context the management and IQAC team identified the potential of promoting ownership of concepts and ideas through patents, business promotions and entrepreneurship development. This led to the formulation of “The Centre for Innovative Research, Incubation and Entrepreneurship Development” during October 2018. With a visionary of establishing a sound environment in research, innovation and incubation for the students and faculty members, the CRED spearheaded with multiple activities through Research and Innovations Promotion Committee (RIPC) and Incubation and Startup Promotion Committee (ISPC).

4. The Practice: From Innovator to Entrepreneur

A. Research promotion through R&D Committee: The College has created basic and advanced research facilities in the campus with a dedicated research team of faculty members. A dedicated centre lab is established which caters to the research needs of faculty and students of the college and collaborating institutions. Special schemes/awards/policies/incentives to motivate faculty and students towards research and publication in reputed journals are implemented. Faculty members and students are encouraged to participate in conferences, research conclaves, workshops, etc. for interactions with experts in the field. The vibrant R&D culture fosters innovative spirit to kindle the young minds at the campus under able guidance and mentorship of motivated faculty members at all the departments.

B. Innovations promotion through Institution's Innovation Council: Prince Shri Venkateshwara Padmavathy Engineering College in association with Ministry of Human Resource Development (MHRD), Govt. of India has established 'MHRD's Institution's Innovation Council (IIC) during November 2018 to systematically foster the culture of Innovation. The main objective of IIC at PSVPEC is to encourage, inspire and nurture young students by supporting them to work with new ideas and transform them into prototypes. IIC is established to promote innovation in the Institution through multitudinous modes leading to an innovation promotion eco-system in the campus.

C. IPR promotion through IPR Cell: The IPR Cell of the college was constituted in November 2018. The cell was aimed to provide Intellectual Property Rights awareness for teachers and students. It also scrutinizes legal and monetary facets of the documentation of research papers. Many of the intellectual possessions are not sheltered due to the lack of understanding of the importance of IPR. For this reason, IPR cell at PSVPEC was established to contribute knowledge about IPR and aid in filing of patent applications and filing other forms of IPR. IPR cell functions under the Incubation and Startup Promotion Committee (ISPC) of the college. IQAC in association with IPR cell organizes various programmes to propagate the importance of IPR among the students and faculty members of the college.

D. Startup promotion through IBPC: Incubation & Business Promotions Cell (IBPC) nurtures successful indigenous technologies and growth oriented entrepreneurs / enterprises who can contribute to the economic growth of this region and the community. IBPC is reputed for its huge network of successful domain experts, academicians and experienced professionals who can share their technical experience in harnessing the skill of product development. IBPC is also ready to serve both non-technology and technology businesses. This, in turn, may help with faculty and student recruitment, and retention of graduates in the community.

E. Entrepreneurship promotion through ED Cell: The Entrepreneur Development Cell (ED Cell) of PSVPEC has been established in the year 2015-16 to encourage graduating engineers to consider Selfemployment as a career option. This cell promotes the Entrepreneurship through expert lectures, workshops, seminars, business plan, idea pitching competitions and outdoor activities. It also provides technical and marketing support from innovation to entrepreneurship.

5. Evidence of Success:

I. Research promotion through R&D Committee

1. More than 30 % of the faculty members are Ph.D holders
2. Expenditure for Research promotions and Development Rs. 1,10,58,094.00
3. Total publications by faculty members 815
4. Books and Book Chapters by faculty members 22
5. Grants received through Research & Consultancy works done by the RDC Rs. 75,00,000.00
6. No. of MoUs signed 65
7. No. of Conferences organised on research-12
8. - Problems encountered and resources

required:

Under-utilization of research results by the industries needs to be examined at the level of production and utilization of IPR. All patents are not converted to businesses. Risk

management has to be educated to the students and faculty for entrepreneurial initiations. Industry participation is required to work on live problems useful for society. This might lead to collaborative research solutions for the problems in the society. At present the Resources are adequate for the number of takers/participants. In case of increase in takers, the CRED has to be able to accommodate and support with more facilities. Activities carried out of the class hours are a constraint. This results in lesser number of student participation in programmes. Only interested students actively participate in the events. Other students must be given a compulsory awareness and education on entrepreneurship as it might kindle their interest in future. Focus on alliance with technical institutions and Industry to introduce and incubate startups has to be increased.

Best Practice 2 - Responsibilities, Outreach and Impact creation through Extension activities.

1. Title: ROI through Extension – Responsibilities, Outreach and Impact creation through Extension activities.

2. Objectives:

- To educate students, faculty and local community people on self-development through educational resources.
- To enable the people to manage changes in the social and economic arena.
- To organise and conduct programmes that address people's needs and their priorities.
- To use a group approach to enhance cost-effectiveness, creativity and to encourage democratic processes through students and faculty members.
- To make students and faculty become educators by encouraging them to participate in development of the local community people through learning activities.
- To be flexible and innovative in program approaches and to create an impact among the local community on sustainability and development.

3. Context:

Our college inculcates social value and responsibilities to the faculty members and students by imparting extension activities in the neighbourhood for holistic development of the society. Every year the extension activities are planned for various villages in and around the college. All students are engaged in the extension activity which comes under the services and curriculum. Students are also motivated

to organise events and programmes for the people by themselves which make them understand the grass root problems in the society. The Students also are allowed to take up surveys in the villages to understand the problems faced by the people, so as to provide solutions through innovative research or through outreach activities. The college consistently promotes participation of students and faculty members in socio-friendly extension activities through various cells and activity centres. The college aims to develop students' Emotional Quotient through their interaction with various challenges and hurdles faced by the people in the nearby community and encourage stakeholders to develop their positive attitude towards life. The National Service Scheme unit, Rotaract Club and The Youth Red Cross Society play a major role in these initiatives. In addition, outreach programs and invited lectures are also given to the community.

4. The Practice: From Education to Service

A. National Service Scheme (NSS):

The National Service Scheme (NSS) was launched in 1969, the birth centenary year of the Father of Nation, by the Government of India. It is a voluntary association of young people, especially college students to work for campus-community linkages. The aim is to develop student's personality through community service. The NSS unit of PSVPEC provides a platform to the students for community work and developing a sense of involvement in the tasks of nation building. NSS volunteers work to ensure that a needy get help to enhance their standard of living. A variety of activities are organized every year to channelize the energy and idealism of the younger generation into creative pursuits. They educate students and society regarding many issues like health, sanitation, pollution, agriculture, etc. Various health camps and cleanliness drives across campus and slum areas nearby are taken out regularly to create awareness and also to motivate people to work towards a clean environment.

B. Rotaract Club:

Prince Shri Venkateshwara Padmavathy Engineering College in association with Rotary International has established the Rotaract Club with more than 70 members. A young and vibrant team is in place in the Rotaract club such that they are involved in different extension activities and community services. They organize and participate in different extension activities like AIDS awareness rally, Vigilance Awareness, Anti – Dowry programs, Tree – Plantation, Blood Donation, awareness

camps on food and health, health camps in collaboration with hospitals, etc.

C. Youth Red Cross Society:

PSVPEC's Youth Red Cross was established to inculcate in the Youth of our college / country, awareness on the care of their own health and that of others the understanding and acceptance of civic responsibilities and acting accordingly with humanitarian concern, to fulfil the same to enable growth and development. It functions with the one and only aim of serving people in distress without any consideration of caste, religion, language and nationality.

D. Unnat Bharat Abhiyan (UBA): Unnat Bharat Abhiyan is inspired by the vision of transformational change in rural development processes by leveraging knowledge institutions to help build the architecture of an Inclusive India. Prince Shri Venkateshwara Padmavathy Engineering College is one among the various institutions of the nation to take part in the various activities covered under the UBA. The UBA team of our college under the leadership of Principal Dr. G Indira and the Coordinators Dr. X Mercilin Raajini and Mr. G Sathi has identified following villages in order to improvise the livelihood of the village: Gowrivakkam, Mambakkam, Polachery, Ponmar and Vengadamangalam in the Kancheepuram district of Tamilnadu. The UBA team of our college conducted many rallies to create awareness regarding the importance of water in the present & future scenario, eliminating the usage of plastics. The team has taken a detailed survey of the households in the villages to understand the livelihood practices of the villages.

E. Pradhan Mantri Kaushal Vikas Yojana (PMKVY): Pradhan Mantri Kaushal Vikas Yojana (PMKVY) is the flagship scheme of the Ministry of Skill Development & Entrepreneurship (MSDE) implemented by National Skill Development Corporation. Our institution has started PMKVY-TI scheme under AICTE from 2018-19. In 2018-19 session 50 students have enrolled and in 2019-20 session 75 students enrolled in different branches. Our institution provides good infrastructure (Lab and other facilities), best training by our experience trainer to the enrolled students. Assessment of both batches has been successfully completed by different sectors and certificates of qualified students have been also distributed.

5. Evidence of Success: Impact: Through extension and outreach programs, we sensitize the students to develop social values, widespread their responsibilities and knowledge in societal issues and problems by making them to involve with the community people. Through this, we establish a good relationship with NGO, tie-up with Multi National Company and join hands with local community organization and serve the community. Students with profound interest attain the social values and responsibility. Above all, the students get hold of social justice, value, responsibility and sustainability.

Achievements:

The National Service Scheme (NSS) of PSVPEC has been doing remarkable work during the last five years. The unit has been in the forefront of all the activities in the college and has offered many selfless services to the society. The NSS unit have been bestowed with best NSS unit award for the year 2018-19 & 2021-22 by the Anna University, Chennai for the community service and enterprising attitude. Apart from the incessant regular activities in the campus, the units organise many community contact programmes in and outside the campus. The NSS plays a large role in making the students socially committed, self-confident and responsible citizens of the nation. It would be pertinent to note that the committed efforts by the enterprising programme officers of the NSS unit and the NSS volunteers took the NSS unit to exceptional achievements during the last five years. Success through REACHING THE UNREACHED Villages adopted 5 No. of Villages reached through extension 20 No. of trees planted in and around campus 800 No. of trees planted in villages 2000 No. of students participated and benefitted 690 No. of community people participated and benefitted 2400 No. of Students trained through PMKVY 125 No. of Veterinary camps organised in villages 3 No. of Blood camps organised >15 No. of health camps organised in villages 8 No. of collaborations with other institutions and non-profit organisations for extension 10 No. of employment created and provided for people in the nearby villages More than 45 Other services provided to the local community people

1. Constructed a temple for the Ponmar village people
2. Constructed a Community hall for the Ponmar village
3. Renovated irrigation tanks in the nearby villages
4. Linking farmers with agricultural officers and consultants
5. Relief activities during cyclone, floods and Covid-19

Total value of service provided through Extension activities Year

Total Asset created (Rs.)

Academic year	Amount in Rs
2021-2022	175000
2020-2021	139050
2019-2020	236300
2018-2019	266600
2017-2018	174000
2016-2017	223000
Total	1213950

5. Problems encountered and resources required:

Students initially face a constraint in understanding the community in which they work. This is planned to be addressed by the orientation workshops organised by the outreach centres. It is also tough for the students to understand themselves in relation to their community, especially for those students who are from the urban places. Identifying the needs and problems of the community is done effectively but involving the community to solve their own problems is a great challenge, since people are not ready to accept the initiatives readily. Continuous interaction and involvement of the students through living with the community only helps the people change and cooperate with the service units. More focus is required in developing competence required for group living and sharing of responsibilities among the students. Students lack skills in mobilizing community participation. The institution should involve students in research and innovations for agriculture development and sustainable initiatives for the farmers as the college is surrounded by agricultural lands.